

What is Inner Imaging, PC?

Inner Imaging, P.C. offers advanced cardiac imaging called Coronary Calcium Scoring. Recognized as the Gold Standard in Heart Scanning, CCS is clinically proven to detect coronary artery disease (plaque) long before symptoms occur when it is preventable. For the past 88 years the number one cause of death in Law Enforcement is Heart Disease.

Radiation?

ASIR (Adaptive Statistical Iterative Reconstruction) software reduces the dosage for the Heart Scan to **0.7 millisieverts**. This equals 2 months of radiation from the sun or 5 chest X-Rays or 8 round trip flights to CA.

Our advanced screening tests include:

- Heart Screening
- Lung Screening
- Full Body Screening
- Cancer Screening

Cost to members of [Law Enforcement](#) :

EXAM	FEE
Heart, Lung, Abdomen and Pelvis (Body Scan)	\$375.00

American Heart Association 2007

Recognized by the American Heart Association, Coronary Calcium Scoring is the most sensitive non-invasive test proven to assess your true risk of future heart attack.

The Saint Francis Heart Study

Published in the Journal of the American College of Cardiology July 2005, establishes the prognostic accuracy of Coronary Calcium Scoring greatly out-weigh that of the Framingham risk factor analysis. This landmark study is the largest randomized, population-based clinical study to date and involves more than 4,000 people representative of the American population.

Inner Imaging

LOCATION:

165 East 84th Street
New York, NY 10028
212-777-8900 Phone
212-991-5450 Fax

www.innerimagingpc.com

Inner Imaging, P.C.

*Early Detection of
Coronary Disease
for members of*

***Law
Enforcement***

Why This Test?

As in other things you do.....
If you catch the criminal or the victim early it saves lives. Catching coronary artery disease and lung disease early can save yours.

Here are some facts about CAD (Coronary Artery Disease)

- 1,600,000 people will suffer a heart attack this year.
- For 500,000 people the first symptom of heart disease is death.
- One person per minute will die from a heart attack.
- Majority of heart attacks occur in people with normal cholesterol levels.
- 68% of heart attacks occur in arteries that are less than 50% blocked.
- 56% of those who pass their stress test have advanced coronary artery disease that will go undetected.

What is the best alternative?

Screening for Heart Disease using a Coronary Calcium Score can see coronary artery disease (plaque) as much as two decades before symptoms occur with an accuracy (sensitivity) of between 98-99%. It can find it early when treatment plans are optimized.

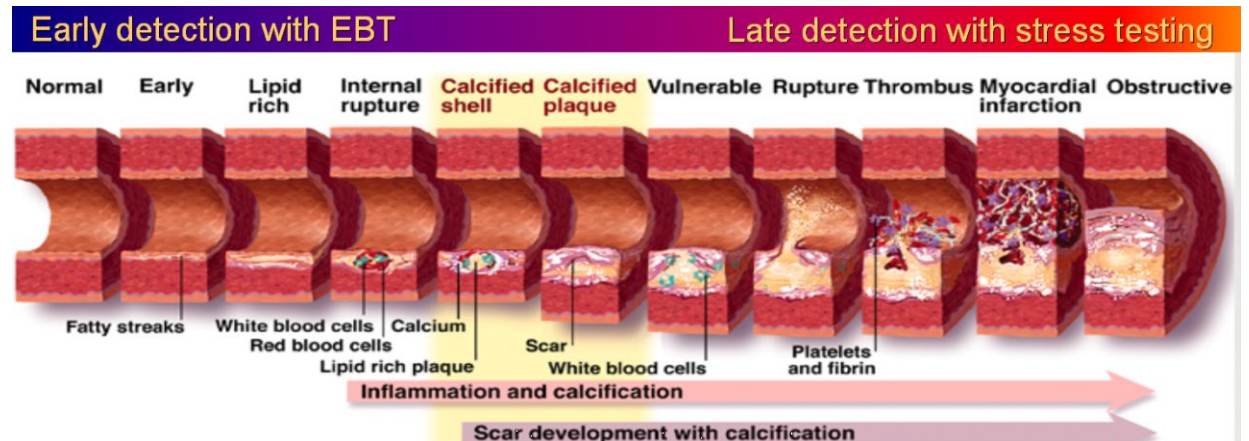
What is Atherosclerosis?

Coronary Artery Disease is called “the silent killer” because plaque can build up unknowingly in the arteries surrounding the heart. This condition called atherosclerosis or hardening of the arteries can block needed blood supply to the heart muscle. These plaques can also unexpectedly rupture causing a sudden heart attack.

Heart Scan Results

The results of this quick and easy Heart Scan provide you and your doctor with information that could save your life.

- True cardiac risk assessment
- Early detection of coronary plaque
- Determination of drug treatments
- Evaluate effectiveness of therapy



Who should have the test?

Generally, men and women 35 and over, with one or more risk factors, should consider this Screening.

Stress testing detects advanced disease, when the artery is already blocked. Our Heart Scan can detect disease early when it is treatable, greatly reducing your risk of a heart attack.

Risk Factors for CAD

- Family History of CAD
- Diabetes
- High Cholesterol
- High Blood Pressure
- Smoking History
- Lack of Exercise
- Obesity
- Stress

INNER IMAGING, PC introduces CANCER SCREENING.

Some things you should know

The principle cause of death in the United States is from Coronary Artery Disease but the greatest fear of death comes from Cancer. Most Cancers are caused by abnormalities in the genetic material of cells. This frequently occurs due to the effects of carcinogens such as tobacco, radiation, chemicals, infectious agents and the terrible mix of silica and the multiple contaminants like those from the World Trade Center collapse. A poor immune system will make one even more vulnerable to Cancers. There were many civilians exposed to this disaster not just first responders so it is no surprise that so many have fallen victim to Cancers.

TEST 1 Inner Imaging has worked with members of the police, and fire, departments for the last 22 years and we too have seen our share of patients with Cancer. **The cost of Our Body Scan is \$375.** Our **Body Scan** screens for disease and has identified 186 separate and distinct diseases. We have also had 12 forms of Cancer confirmed. The Cancers that have been confirmed after using our **Body Scan** were:

- Thyroid Cancer
- Lung Cancers
- Liver Cancer
- Kidney Cancer
- Duodenal Cancer
- Prostate Cancer
- Stomach Cancer
- Uterus Cancer
- Small Bowel Cancer
- Colon Cancer
- Hairy Cell Leukemia
- Birt-Hogg-Dube

TEST 2 Inner Imaging introduced the first **Cancer Screening Panel** for Law Enforcement and Firefighters using biomarkers. It is named after Detective Corey Diaz (NYPD) who died of Pancreatic Cancer. The purpose of this blood panel is to look for markers which suggest that cancer may be present. We were able to convince GHI, Blue Cross Blue Shield NY, The Empire Plan and Pomco to cover this. The co-pay is approximately \$30 if you have this coverage.

******This test is not performed in our office but at BioReference Labs, a list is attached******

The Cancer Panel tests for the following:

- CA19-9, Serum (Proposed as a marker for Pancreatic Carcinoma)
- CA 125 (Proposed as a marker for Ovarian Cancer)
- CEA (Measures a protein in the blood for certain kinds of Cancers)
- Alpha Fetoprotein (Tumor Marker)
- Amylase Serum (Acute Chronic Pancreatitis)
- CMP (Tests for Diabetes).
- GGT (Tests for three forms of liver disease)

Call Inner Imaging, PC for an Appointment and/or Information

212 - 777 - 8900

Located in Manhattan at 165 East 84th Street, New York, NY 10028